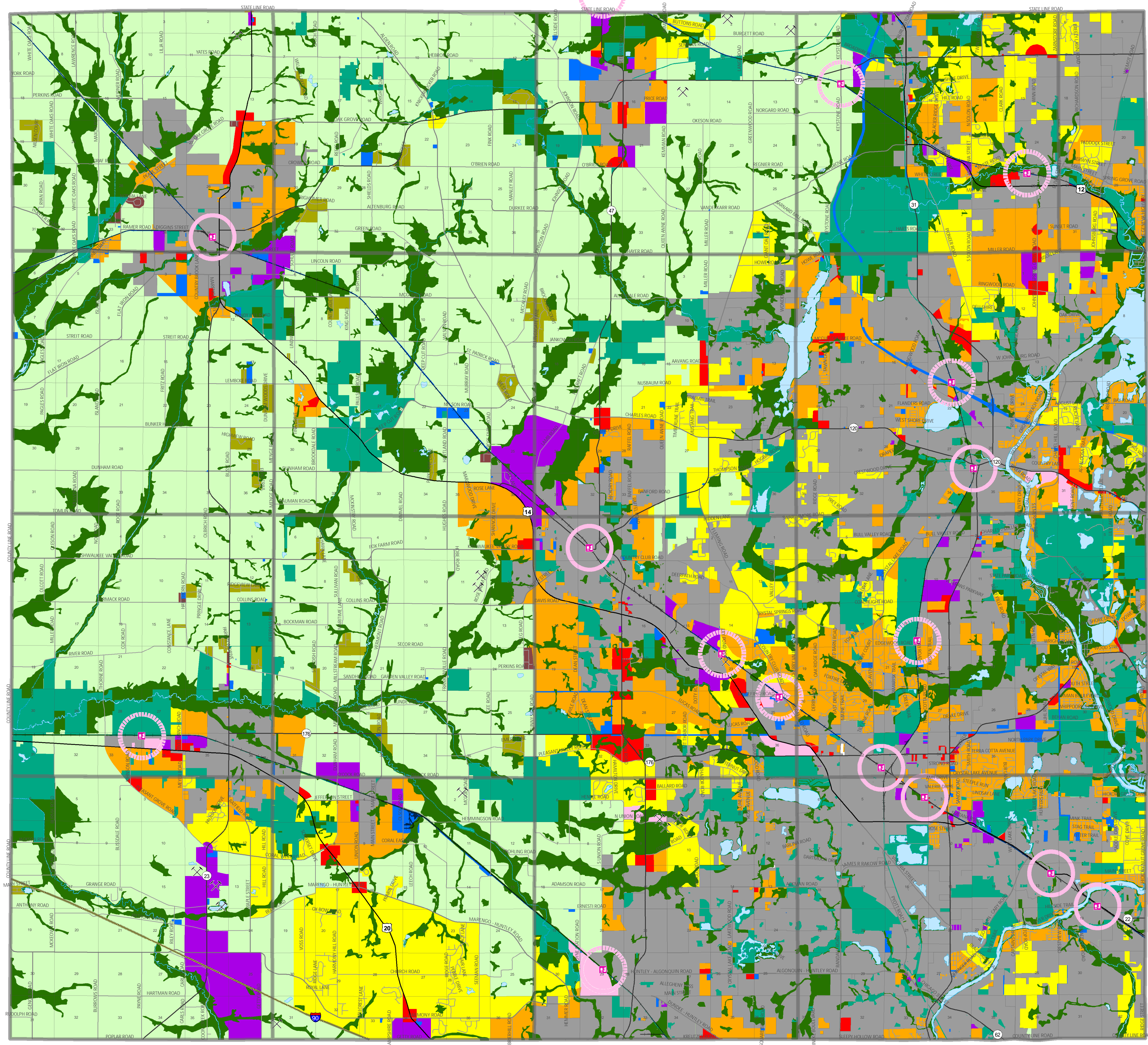


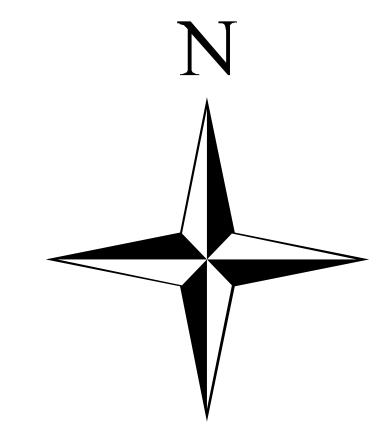
McHenry County Future Land Use

Source:
McHenry County 2030 Comprehensive Plan
Adopted April 20, 2010



- Agricultural
- Open Space
- Environmentally Sensitive Area
- Estate (1 - 5 acre lots)
- Residential (<1 acre lots)
- Mixed Use
- Retail
- Office / Research / Industrial
- Government / Institutional / Utilities
- Incorporated Areas
- Isolated Estate Developments
- Isolated Residential Developments
- TOD Existing Station
- TOD Future Station
- Existing Earth Extraction
- Water

Isolated Residential and Estate Developments are mapped for reference and are not to be used as precedent for future zoning requests.



1 inch = 1 mile